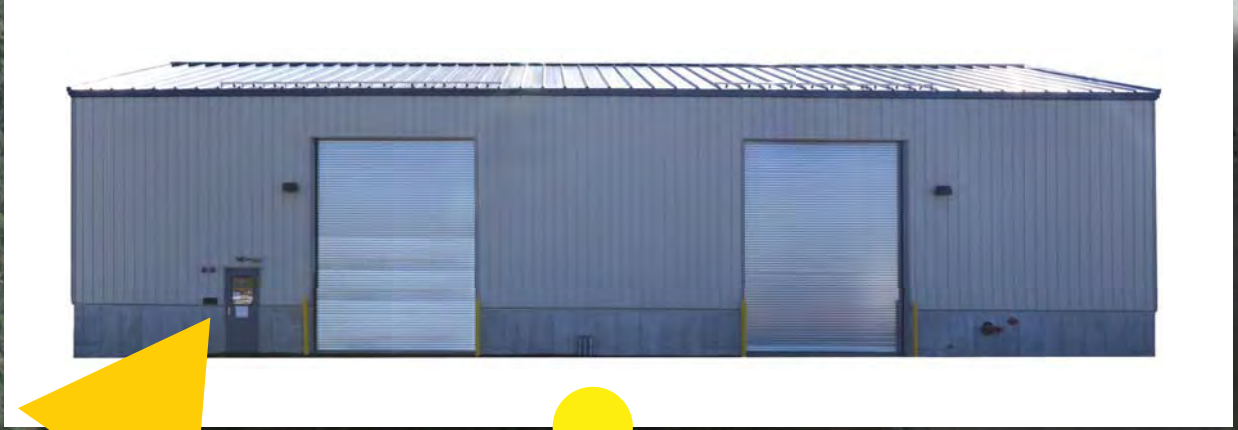


Pease Groundwater and Drinking Water Treatment

**Site 8
Interim Mitigation
System**

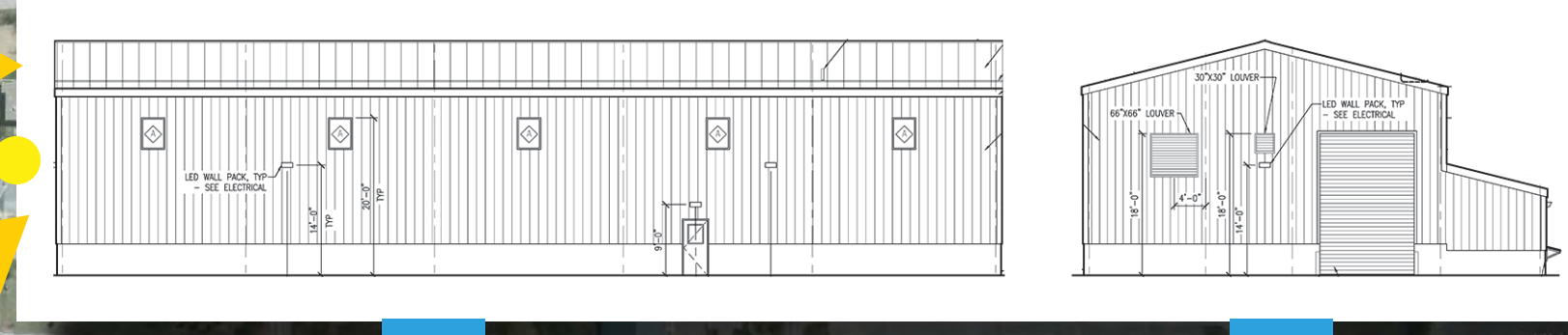
**AIMS
Airfield Interim
Mitigation System**

**Grafton Road
Drinking Water
Treatment Plant (DWTP)**



PFAS Impacted Groundwater

Treated Groundwater
Reinfiltration



PFAS Impacted Groundwater to AIMS

PFAS Impacted Groundwater to AIMS

Reinjected Treated Groundwater

Reinjected Treated Groundwater



Portable Water to Pease
Drinking Water System

Groundwater Supplied by
Smith and Harrison Wells to
Grafton Road DWTP

Groundwater Supplied from Haven Well to Grafton Road DWTP

The Site 8 PFAS Interim Mitigation System (IMS) treats PFAS-impacted groundwater using granular activated carbon and an ion exchange resin. Impacted groundwater is pumped to the Site 8 (IMS) through a series of extraction wells located in the Newington Town forest north of the treatment building. The treated groundwater is then reinfiltrated, replenishing the aquifer.

The Airfield Interim Mitigation System (AIMS) treats PFAS-impacted groundwater using a series of granular activated carbon vessels followed by ion exchange resin. Impacted groundwater is supplied to AIMS by a series of extraction wells located both on and off the airfield. The treated groundwater is then pumped into a series of injection wells located in the Pease airfield, replenishing the aquifer.

The Grafton Road Drinking Water Treatment Plant (DWTP) was upgraded in 2019-2021 to treat the Smith, Harrison, and Haven Wells for PFAS using a combination of ion exchange resin followed by granular activated carbon. The treated drinking water is then supplied to the Pease Drinking Water System.